

90°27'W

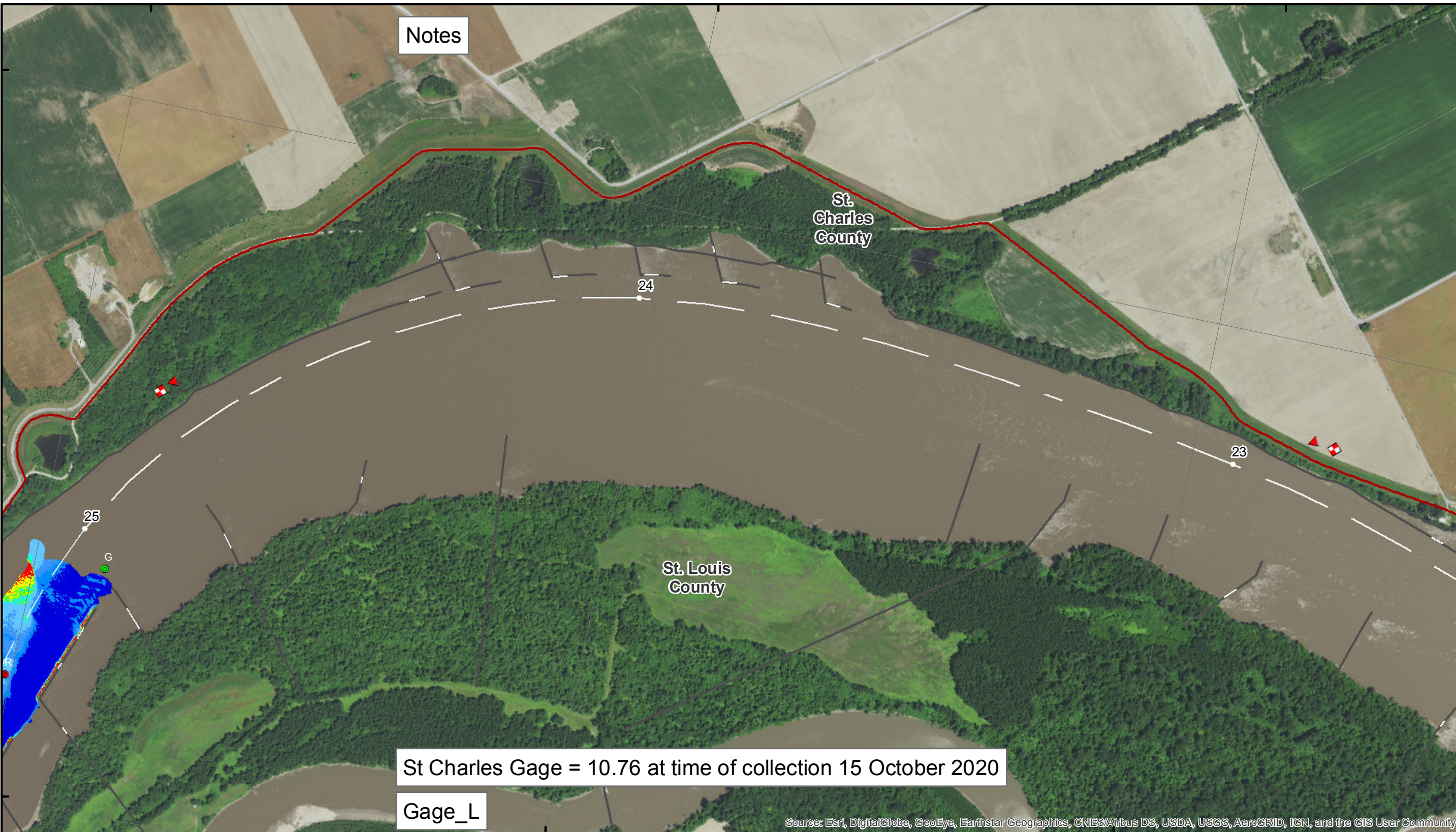
90°26'W

90°25'W

38°50'N

38°50'N

38°49'N



Notes

St. Charles County

St. Louis County

St Charles Gage = 10.76 at time of collection 15 October 2020

Gage_L

Source: Esri, DigitalGlobe, GeoEye, Earthstar Geographics, CNES/Airbus DS, USDA, USGS, AeroGRID, IGN, and the GIS User Community

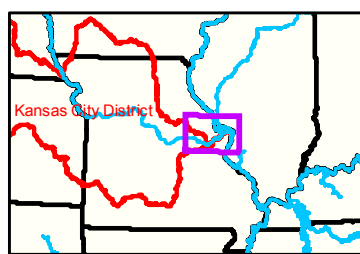


Disclaimer: The U.S. Army Corps of Engineers (USACE) is not responsible for the accuracy or completeness of the information contained in this document. The information is provided for informational purposes only and should not be used for navigation or other critical decisions. The information is provided as is, without warranty of any kind. The information is provided for informational purposes only and should not be used for navigation or other critical decisions. The information is provided as is, without warranty of any kind.

KANSAS CITY DISTRICT MISSOURI RIVER AREA OFFICE	
Submitted by:	MIRAO
Reviewed by:	MIRAO
Approved by:	MIRAO

Survey Information
 MO_01_LMR
 MO_01_LMRX_20201015_CS_25_0_26_0_SORT
 15 October 2020

Sheet Number
 11 of 46



90°26'W

90°25'W

LEGEND

	< 8		< 8 ft		Green Passing		Green		Green CAN
	8 - 9		8 - 9 ft		Red Passing		Red		Red NUN
	9 - 9.5		9 - 10 ft		Green Crossing		Junction		
	9.5 - 10		10 - 12 ft		Red Crossing				
	10 - 12		River Mile						
	12 - 14		Sailing Line						
	14 - 16		BSNP Structure						
	> 16		Levee						

Buoy

Green CAN

Red NUN

NOTES:
 Horizontal Coordinate System:
 World Geodetic System of 1984 (WGS84), projected to the Universal Transverse Mercator (UTM) Zone 15 North.
 Distance units in U.S. Survey Feet

Vertical Datum:
 Soundings are shown in feet and indicated depths are referenced to water surface at time of collection.

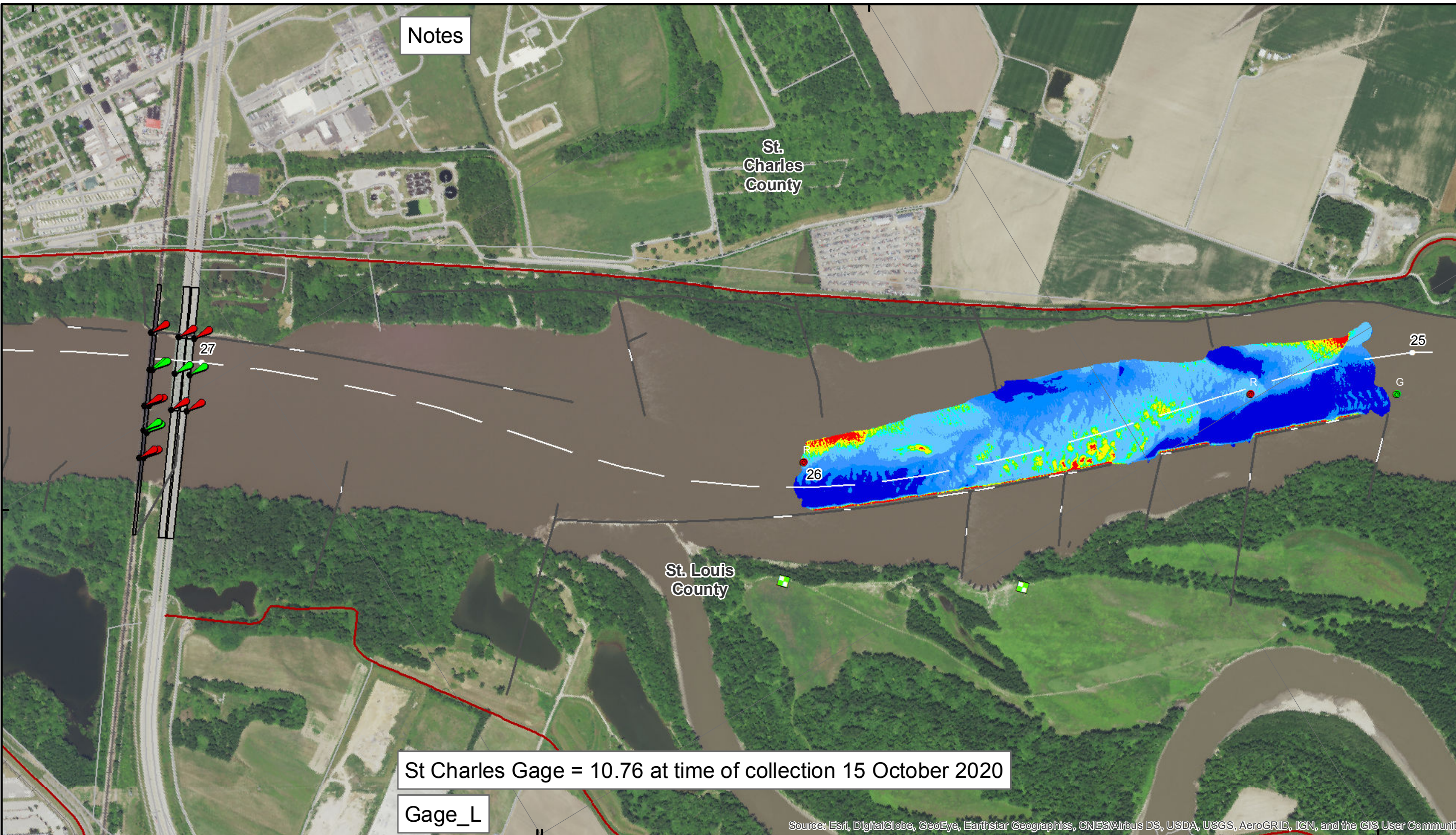
The information depicted on this map represents the results of a survey conducted on the date indicated and can only be considered to represent the general condition existing at that time.

The location of navigation aids are based on and provided by the U.S. Coast Guard.

0 312.5 625 937.5 1,250 2,500 Feet

38°48'N

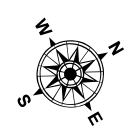
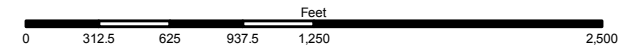
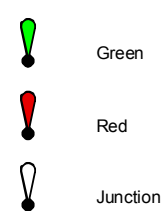
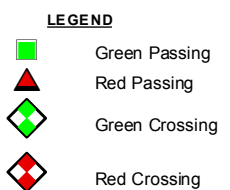
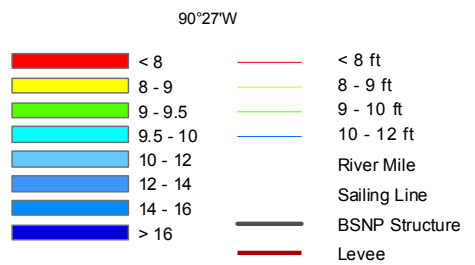
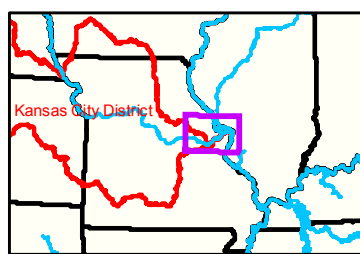
90°28'W 38°49'N



St Charles Gage = 10.76 at time of collection 15 October 2020

Gage_L

Source: Esri, DigitalGlobe, GeoEye, Earthstar Geographics, CNES/Airbus DS, USDA, USGS, AeroGRID, IGN, and the GIS User Community



NOTES:
 Horizontal Coordinate System:
 World Geodetic System of 1984 (WGS84), projected to the Universal Transverse Mercator (UTM) Zone 15 North.
 Distance units in U.S. Survey Feet

Vertical Datum:
 Soundings are shown in feet and indicated depths are referenced to water surface at time of collection.

The information depicted on this map represents the results of a survey conducted on the date indicated and can only be considered to represent the general condition existing at that time.

The location of navigation aids are based on and provided by the U.S. Coast Guard.

90°27'W

38°49'N



DISCLAIMER: The U.S. Army Corps of Engineers makes no warranty, express or implied, for the use of this information for any purpose other than that for which it was prepared. The user assumes all liability for any use of this information for any purpose other than that for which it was prepared. The U.S. Army Corps of Engineers makes no warranty, express or implied, for the use of this information for any purpose other than that for which it was prepared. The user assumes all liability for any use of this information for any purpose other than that for which it was prepared.

KANSAS CITY DISTRICT MISSOURI RIVER AREA OFFICE	
Submitted by:	MRAO
Reviewed by:	MRAO
Approved by:	MRAO

Survey Information
 MO_01_LMR
 MO_01_LMRX_20201015_CS_25_0_26_0_SORT
 15 October 2020

Sheet Number
 12 of 46